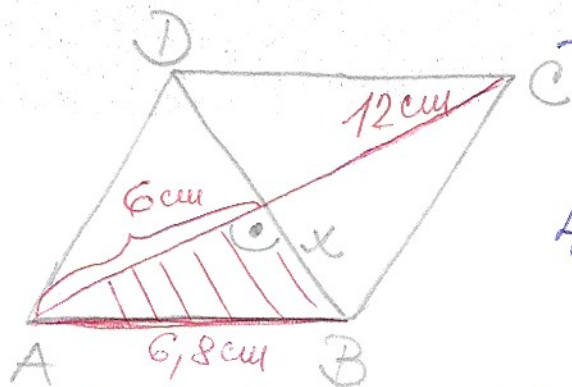


2) kosočtv. ABCD:  $a = 6,8 \text{ cm}$   
 $e = 12 \text{ cm}$   
 $f = ? \text{ cm}$

M8



$$6,8^2 = 6^2 + x^2$$

$$46,24 = 36 + x^2$$

$$x^2 = 46,24 - 36$$

$$x^2 = 10,24$$

$$x = \sqrt{10,24}$$

$$x = 3,2 \text{ cm}$$

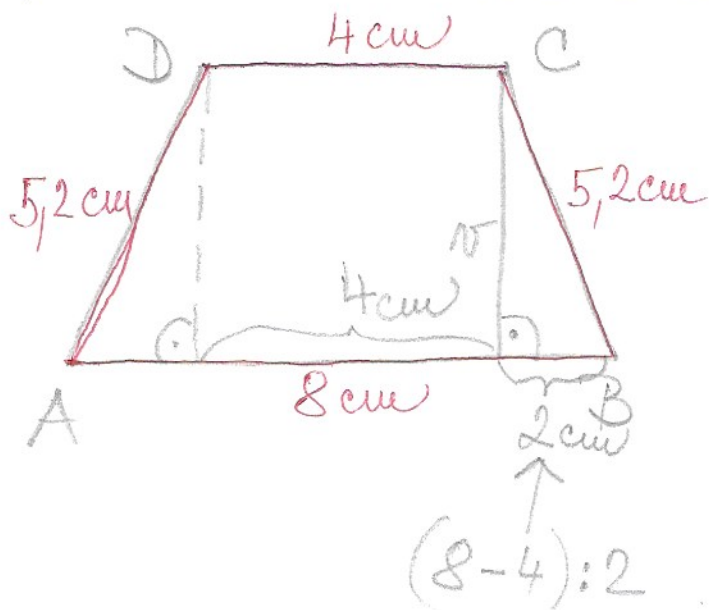
$$f = 2 \cdot x$$

$$f = 2 \cdot 3,2$$

$$f = 6,4 \text{ cm}$$

Delka úhlopříčky  $f$  je 6,4 cm.

3) rovnoram. lich. ABCD:  $a = 80 \text{ mm} = 8 \text{ cm}$   
 $b = 52 \text{ mm} = 5,2 \text{ cm}$   
 $c = 40 \text{ mm} = 4 \text{ cm}$   
 $v = ? \text{ cm}$



$$5,2^2 = 2^2 + v^2$$

$$27,04 = 4 + v^2$$

$$v^2 = 27,04 - 4$$

$$v = \sqrt{23,04}$$

$$v = 4,8 \text{ cm}$$

Výška rovnoram. lich. je 4,8 cm.