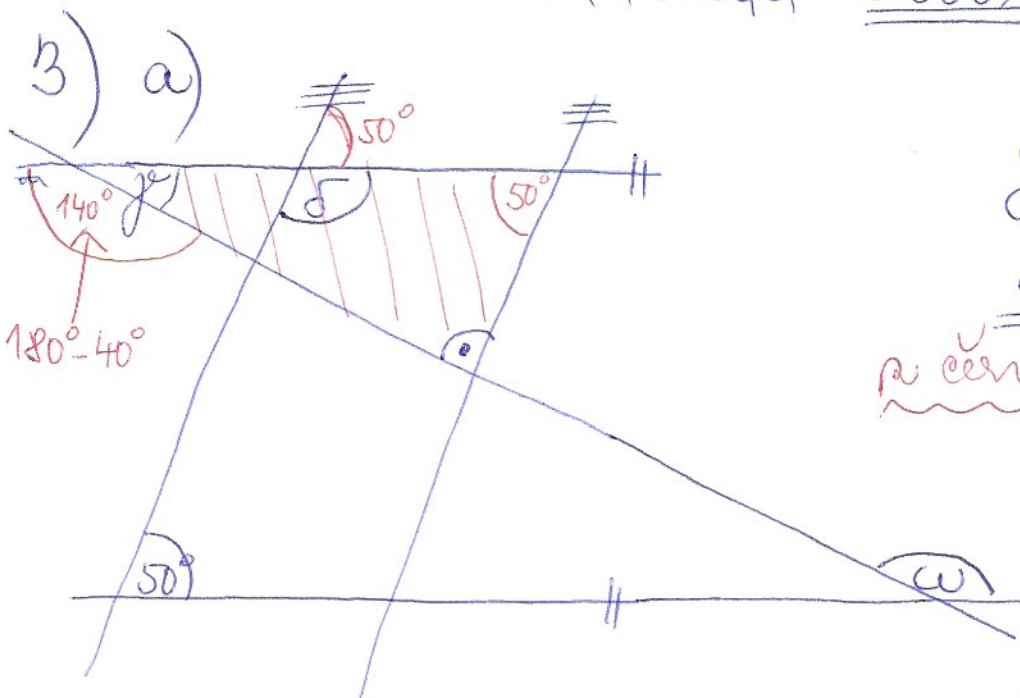


22. - 29. 4. 2020

ŘEŠENÍ / PRO RYCHLÍKY

- 1)
- a) $16 \text{ dm}^2 - 8 \text{ cm}^2 = 1600 \text{ cm}^2 - 8 \text{ cm}^2 = \underline{\underline{1592 \text{ cm}^2}}$
 - b) $1 \text{ l} + 13 \text{ cm}^3 = 1000 \text{ cm}^3 + 13 \text{ cm}^3 = \underline{\underline{1013 \text{ cm}^3}}$
 - c) $5 \text{ kg} - 450 \text{ g} = 5 \text{ kg} - 0,45 \text{ kg} = \underline{\underline{4,55 \text{ kg}}}$
 - d) $7 \text{ m} - 81 \text{ mm} = 700 \text{ cm} - 8,1 \text{ cm} = \underline{\underline{691,9 \text{ cm}}}$
 - e) $7 \text{ g} + 89 \text{ mg} = 7 \text{ g} + 0,089 \text{ g} = \underline{\underline{7,089 \text{ g}}}$

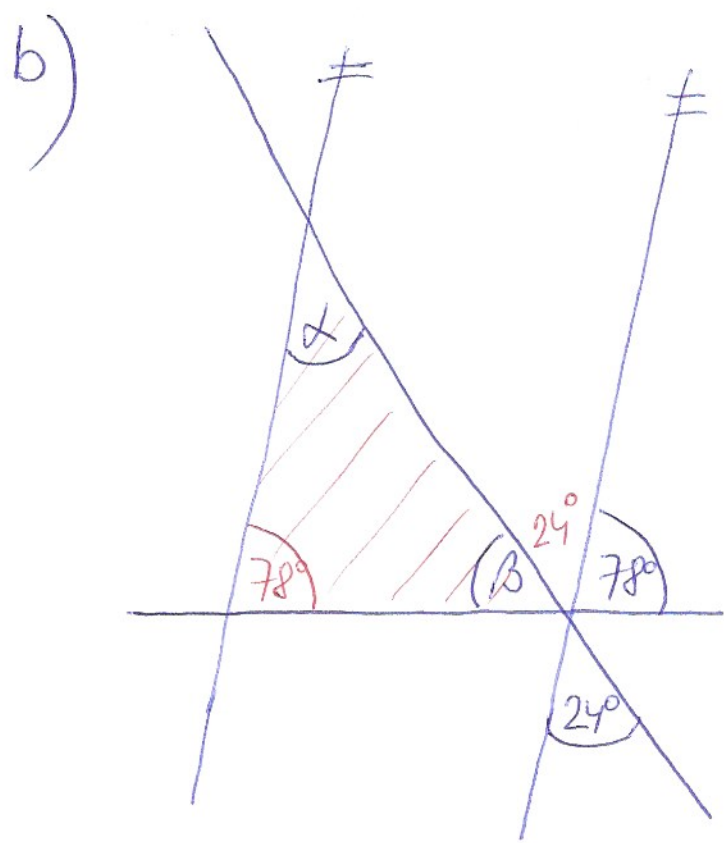
- 2)
- a) $1 \text{ hl} = 1000 \text{ dl}$
 $1000 : 5 = \underline{\underline{200 \text{ krad'}}$
 - b) $1 \text{ t} = 1000000 \text{ g}$
 $1000000 : 200 = \underline{\underline{5000 \text{ krad'}}$



$\delta = 180^\circ - 50^\circ$
 $\delta = 130^\circ$

u červeného Δ:
 $90^\circ + 50^\circ + \gamma = 180^\circ$
 $\gamma = 180^\circ - 140^\circ$
 $\gamma = 40^\circ$

$\omega = 140^\circ$ (střídavé úhly)



$$\beta + 24 + 78 = 180$$

$$\beta + 102 = 180$$

$$\beta = 180 - 102$$

$$\beta = 78$$

2 červeného Δ:

$$\alpha + \beta + 78 = 180$$

$$\alpha + 78 + 78 = 180$$

$$\alpha + 156 = 180$$

$$\alpha = 180 - 156$$

$$\alpha = 24$$

4) a)

$$1,25a = 75 \text{ m}^2 + 0,5a$$

$$\square \text{ m}^2 = 1,25a - 0,5a$$

$$\square \text{ m}^2 = 0,75a$$

$$\square \text{ m}^2 = 75 \text{ m}^2$$

$$\underline{\underline{\square = 75}}$$

b)

$$5 \text{ h} - 280 \text{ min} = 1200 \text{ s}$$

$$18000 \text{ s} - \square \text{ min} = 1200 \text{ s}$$

$$\square \text{ min} = 18000 - 1200 \text{ s}$$

$$\square \text{ min} = 16800 \text{ s}$$

$$\square \text{ min} = 280 \text{ min}$$

$$\underline{\underline{\square = 280}}$$

$$5 \cdot 3600$$

$$5 \text{ h} = 18000 \text{ s}$$

$$1 \text{ h} = 3600 \text{ s}$$

$$\quad \quad \quad \wedge$$

$$\quad \quad \quad 60 \cdot 60$$

$$\frac{16800}{48} : 60 = 280$$

c) $24l - 2dm^3 = \boxed{400} cm^3$
 $0,4 dm^3 = \boxed{} cm^3$
 $400 cm^3 = \boxed{} cm^3$
 $\boxed{} = 400$

5) a) $(0,09 \cdot 0,3) : 2,7 = 0,027 : 2,7 = \underline{\underline{0,01}}$
 $0,27 : 27$

b) $4,5 \cdot 0,1 + (2,5 - 5 : 10) = 0,45 + (2,5 - 0,5) =$
 $= 0,45 + 2 = \underline{\underline{2,45}}$

c) $0,2 : 0,04 - (0,6 : 0,3) = 5 - 2 = \underline{\underline{3}}$
 $20 : 4$ $6 : 3$

d) $0,7 \cdot 0,08 + 0,008 : 0,2 + 3 : 5 =$
 $= 0,056 + 0,04 + 0,6 = \underline{\underline{0,696}}$
 $0,08 : 2$

6) $m(6; 8; 9) = \underline{\underline{72}}$

$6 = 2 \cdot 3$
 $8 = 2 \cdot 2 \cdot 2$
 $9 = 3 \cdot 3$

Na nocni smene se opred
 sejdou na 72 tydni.

7) $D(76; 152; 95) = 19a \Rightarrow$ tj, kolik posekal aru
 za 1 hodinu

$76 = 2 \cdot 2 \cdot 19$
 $152 = 2 \cdot 2 \cdot 2 \cdot 19$
 $95 = 5 \cdot 19$

celkem aru, ktere posekal:
 $76 + 152 + 95 = 323a$

počet hodin . . . $323 : 19 = \underline{\underline{17 \text{ hod}}}$

Zabradnik strivil sekanim 17 hodin.